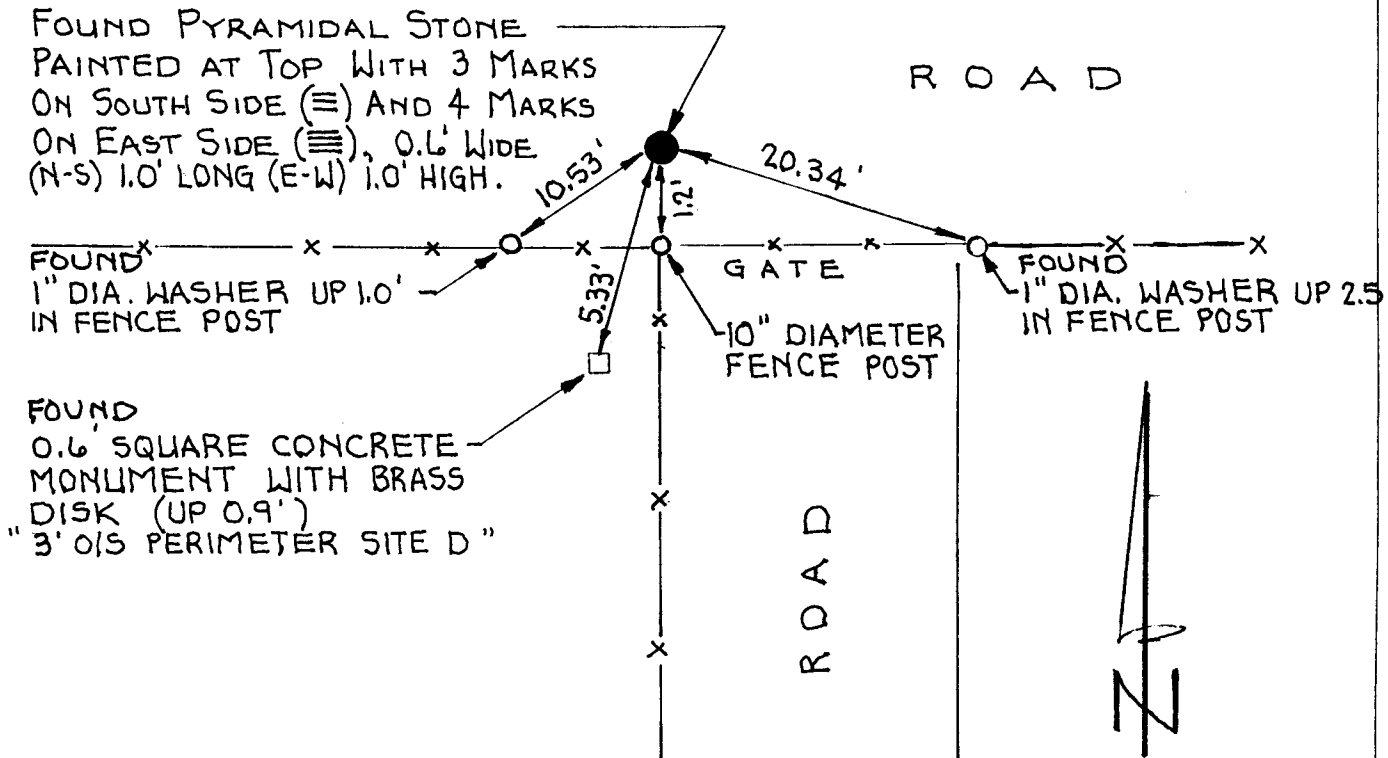


State of Wyoming Corner Record

(In compliance with the CORNER PERPETUATION AND FILING ACT, Wyoming Statutes, 1977, Section 36-11-101, et. seq., and the Rules and Regulations of the Board of Registration for Professional Engineers and Professional Land Surveyors.)

Reverse side of this form may be used if more space is needed.

Record of original survey and citation of source of historical information (if corner is lost or obliterated). Description of corner monumentation evidence found and/or monument and accessories established to perpetuate the location of this corner. Sketch of relative location of monument, accessories, and reference points with course and distance to adjacent corner(s) (if determined in this survey). Method and rationale for reestablishment of lost or obliterated corner.



LARAMIE COUNTY CLERK
CHEYENNE, WY.
95 DEC 26 AM 9 19
174434

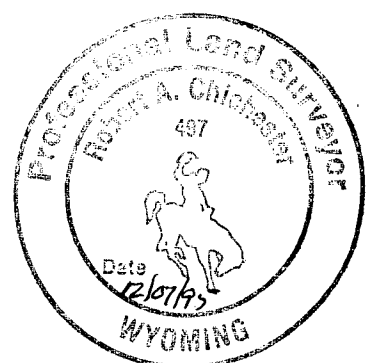
Date of Field Work: Nov. 27, 1995 Office Reference: BELVOIR RANCH

CROSS INDEX DIAGRAM

A	1	2	3	4	5	6	7	8	9	10	11	12	13	14	15	16	17	18	19	20	21	22	23	24	25
B																									
C	6			5					4						3					2					1
D																									
E																									
F																									
G																									
H																									
J																									
K																									
L																									
M																									
N																									
O																									
P																									
Q																									
R																									
S																									
T																									
U																									
V																									
W																									
X																									
Y																									
Z																									

Firm/Agency, Address
 PREPARED BY:
JR ENGINEERING
 4812 S. COLLEGE
 FORT COLLINS, CO.

This corner record was prepared by me or under my direction and supervision.
 SEAL & SIGNATURE



Robert A. Chickasaw

BOOK 1414 **0158**
 Corner Name: NE CORNER Section: 20 T 13N R 69W; 6TH P.M. Cross-Index No.: N-9
SBRPEPLS/PLSW: March 1994 (CICR_SJA)